

HOWARD ROTAVATOR®

300/350 SPARE PARTS LIST

THE WORLD'S LEADING MANUFACTURER OF ROTARY TILLAGE EQUIPMENT

HOWARD ROTAVATOR CO. LTD., WEST HORNDON, ESSEX

A member of the Rotary Hoes Group of Companies

Telephone: HORNDON GREEN 361 Telex: 99217 Cables: ROTAVATOR BRENTWOOD

AUSTRALIA · FRANCE · GERMANY · ITALY · NEW ZEALAND · SOUTH AFRICA · SPAIN · U.S.A.



THE QUEEN'S AWARD TO INDUSTRY 1966

Howard Rotavator 300/350

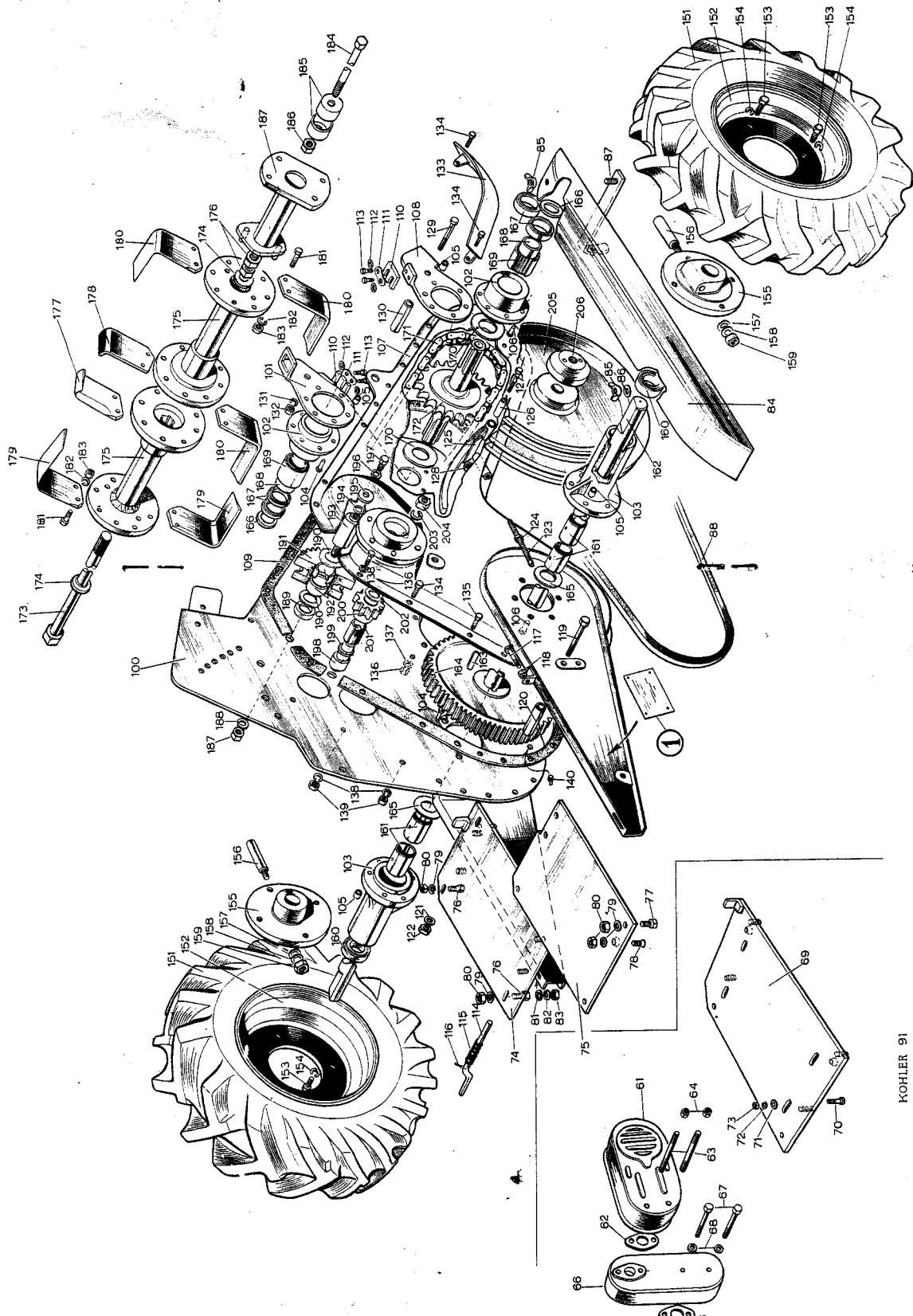
PARTS LIST

When ordering spare parts, it is essential to state the serial number of the machine for which the part is required, the part number (NOT the illustration number) and the description. The machine serial number plate (ill. 1) is attached to the left-hand side of the engine support frame beneath the engine. We cannot guarantee that correct parts will be supplied unless the correct machine number and part number is given.

In the following parts list, all directions "left" or "right" are as viewed from the rear of the machine.

Illus. No.	Part No.	Description	No. off	Illus. No.	Part No.	Description	No. off
1	60954	Machine Number Plate	1				
CLUTCH ASSEMBLY				POWER AND FRAME UNIT			
2	66427	Control Frame	1	B.3001070		Kohler K91 Engine—Howard '300'	1
3	66391	Operating Arm	1	B.3001130		Kohler K141 Engine—Howard '350'	1
4	25914	Pin	1	61	B.3220145	Muffler—Kohler Part No. 220145	1
5	B.8010040	Splitpin 1/16" dia. x 1/2" long	1	62	B.3220122	Gasket—Kohler Part No. 220122	2
6	S.1205220	Bolt 5/16" UNC. x 2 3/4" long	1	63	B.3220133	Muffler Stud—Kohler Part No. 220133	2
7	S.7205020	Locknut 5/16" UNC.	2	64	B.3101510	Nut—Kohler Part No. X-81-1	2
8	66926	Clutch Release	1	65	68410	Exhaust Gasket	1
9	B.50616045	Ballrace—Fischer 2062—5/8" i.d. x 1.9/16" o.d. x 7/16" w. Double-Sealed	1	66	68317	Muffler Elbow	for 1
10	14509	Washer	1	67	S.1204120	Bolt 1/2" UNC. x 1 1/2" long	Kohler 2
11	68930	Clutch Cone Outer	1	68	S.8040840	Spring Washer 1/4" dia.	K91 2
12	S.42410040	Countersunk Setscrew No. 10 UNC. x 1/2" long	8	69	68306	Engine Baseplate	Engine 1
13	68938	Clutch Drive Shaft—for Kohler K91	1	70	S.1405090	Bolt 5/16" UNC. x 1 1/8" long	4
	B.8012320	Tension Pin 3/16" dia. x 1 1/2" long—for Kohler K91	1	71	S.8051010	Flat Washer 5/16" dia.	4
13	68928	Clutch Drive Shaft—for Kohler K141	1	72	S.8050940	Spring Washer 5/16" dia.	4
14	68312	Key—for Kohler K91	1	73	S.7205010	Nut 5/16" UNC.	4
14	66927	Key—for Kohler K141	1	74	69155	Engine Baseplate	1
15	68908	Clutch Cone Inner and Lining	1	75	69157	Engine Baseplate—Upper	1
16	66923	Spring	1	76	S.1206120	Bolt 3/8" UNC. x 1 1/2" long	2
17	68931	Spring Pad	1	77	S.1406080	Setscrew 3/8" UNC. x 1" long.	for 2
18	B.8001160	Circlip 2 3/4" dia. Internal	1	78	S.2406100	Bolt 3/8" UNC. x 1 1/2" long, Slotted Hex. Head Countersunk Head	Kohler K141 Engine 2
19	B.51227075	Ballrace—LS.12.RSSV.3—1 1/2" i.d. x 2 3/4" o.d. 11/16" w. Double-Sealed	1	79	S.8061140	Spring Washer 3/8" dia.	6
20	68929	Engine Pulley	1	80	S.7206010	Nut 3/8" UNC.	6
21	B.8002080	Circlip 1 1/4" dia. External	1	81	S.8051010	Flat Washer 5/16" dia.	4
22	68313	Backplate	1	82	S.8050940	Spring Washer 5/16" dia.	4
23	66440	Locking Pin	1	83	S.7205010	Nut 5/16" UNC.	4
24	S.1205240	Bolt 5/16" UNC. x 3" long	1	84	68318	Belt Guard	1
25	S.8051030	Shakeproof Washer 5/16" dia. Internal	1	85	S.7205060	Wing Nut 5/16" UNC.	2
26	S.7205010	Nut 5/16" UNC.	1	86	S.8051010	Flat Washer 5/16" dia.	1
27	S.1406060	Setscrew 3/8" UNC. x 3/4" long, hex. head	4	87	68831	Belt Guard Bracket	1
28	S.8061130	Shakeproof Washer 5/16" dia. Internal	4	88	B.4006170	Vee-Belt—Fenner Alpha 560	1
29	G.316	Spacer	4	89 to 99 not allocated.			
30	S.17305050	Socket Head Countersunk Screw 5/16" UNF. x 3/8" long, UNBRAKO KA.—for Kohler K91	4	BACKPLATE AND CHAINCASE			
	68932	Brake Block Rivet Assembly comprising:—	1	64327		Backplate Assembly comprising:—	1
31	68933	Brake Shoe	1	100	66592	Backplate	1
32	68936	Brake Block	1	101	66639	Depth Skid Bracket R.H.	1
33	B.8029030	Rivet 1/8" dia. x 3/8" long, Flat head, Semi-tubular	2	102	68714	Rotor Bearing Housing	1
34	S.41410070	Bolt No. 10 UNC. x 7/8" long, Hex. head	2	103	64330	Axle Bearing Housing	1
35	69123	Keeper Plate	2	104	B.8035070	Avdelok Bolt—Ref. 26110808	12
36	S.8030540	Spring Washer 3/16" dia.	2	105	B.8036020	Avdelok Collar—Ref. 26620800	12
37	S.7210200	Nut No. 10 UNC.	2	64338		Chainbox Assembly comprising:—	1
38	34233	Pin	1	102	68714	Rotor Bearing Housing	1
39	B.8010040	Splitpin 1/16" dia. x 1/2" long	1	103	64330	Axle Bearing Housing	1
	64417	Clutch Cable Assembly comprising:—	1	105	B.8036020	Avdelok Collar—Ref. 26620800	12
40		Cable	1	106	B.8035060	Avdelok Bolt—Ref. 26110807	12
41	26575	Spring	1	107	66593	Chainbox	1
42	B.7001090	Clutch Lever—Doherty 107 PA. 7/8" LH.	1	108	66638	Depth Skid Bracket L.H.	1
43	B.8003290	Cable Clip—John Bull—Size 'S'	2	109	64394	Chaincase Gasket	1
44	B.7001220	Throttle Control—Auto-car Electric—Type WC.223—Red Handle, Inner Cable 57 1/2" long, Outer Cable 54 1/2" long	1	110	64496	Weed Cutter	2
45	B.3102330	Ground Lead Extension 65" long, LH.146B-5312	1	111	G.830	Keeper Plate	2
46	B.7005100	Stop Switch—Miller D.2 Spec. 7/8" Bar—7/8" Screw	1	112	S.8040830	Shakeproof Washer 1/4" dia. Internal	4
47	67782	Short Cable and Terminal	1	113	S.1304050	Bolt 1/2" UNF. x 3/8" long	4
48	S.3902030	Setscrew 2 BA. x 3/8" long, Cheese Head	3	114	64469	Retaining Pin	1
49	S.8030540	Spring Washer 3/16" dia.	3	115	P.0869	Spring	1
50	54695	Cable Nipple	1	116	B.8010130	Splitpin 3/32" dia. x 3/4" long	1
51	B.3210149	Throttle Cable Clip—Kohler Part No. 210149	1	117	64495	Adjusting Bolt	1
52	S.1703040	Setscrew 3/16" BSF. x 1/2" long, Hex. Head	1	118	S.7206010	Nut 3/8" UNC.	1
53	S.7503010	Nut 3/16" BSF.	1	119	S.1108280	Bolt 1/2" UNF. x 3 1/2" long	1
54 to 60 not allocated.				120	64392	Spacer	1
				121	S.8081440	Spring Washer 1/2" dia.	1
				122	S.7108010	Nut 1/2" UNF.	1
				123	67280	Adjuster Screw	1
				124	S.7205020	Locknut 5/16" UNC.	1
				125	67275	Chain Tensioner	1
				126	67281	Sleeve	1

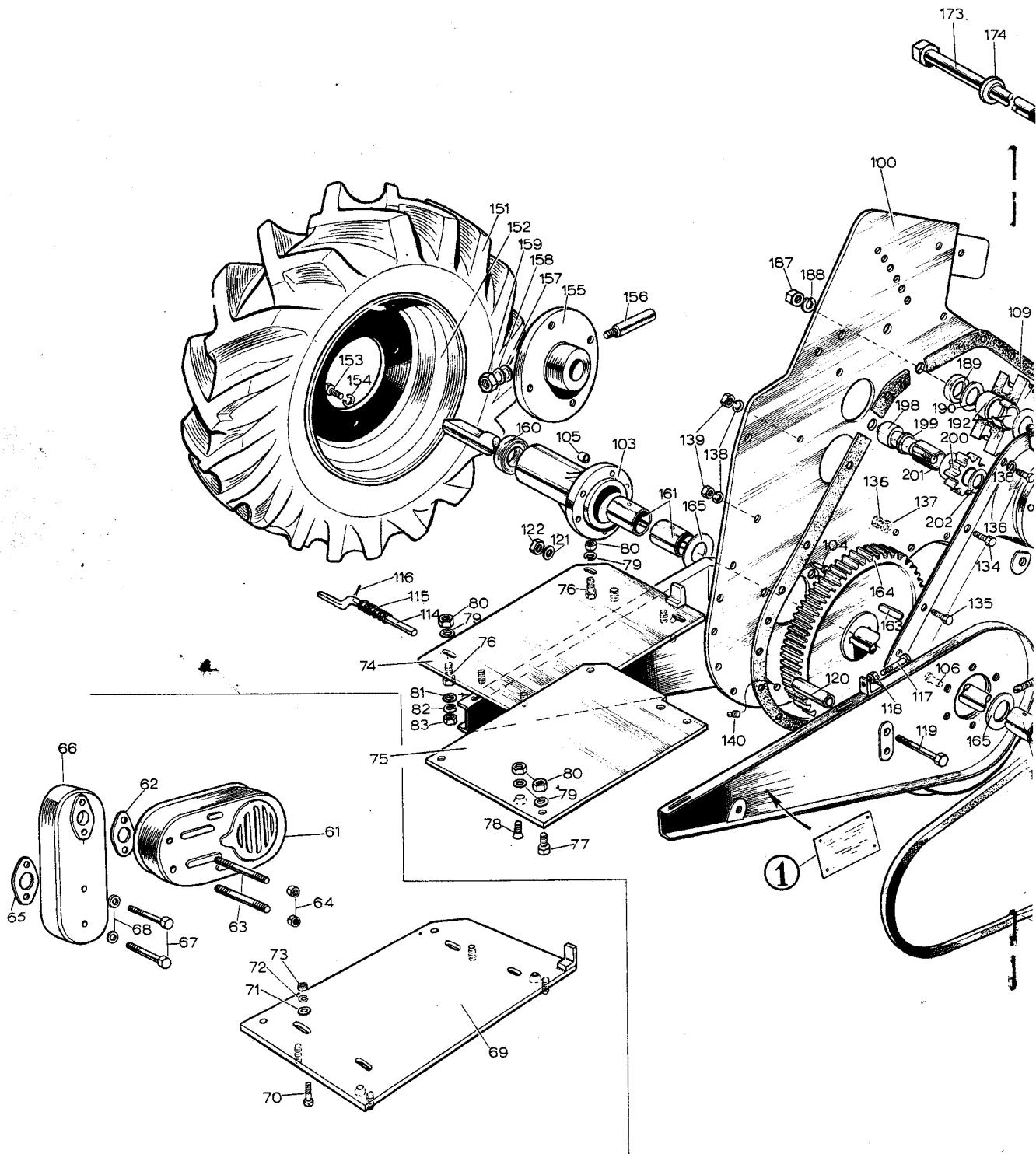
Rotavator 300/350



KOHLER 91

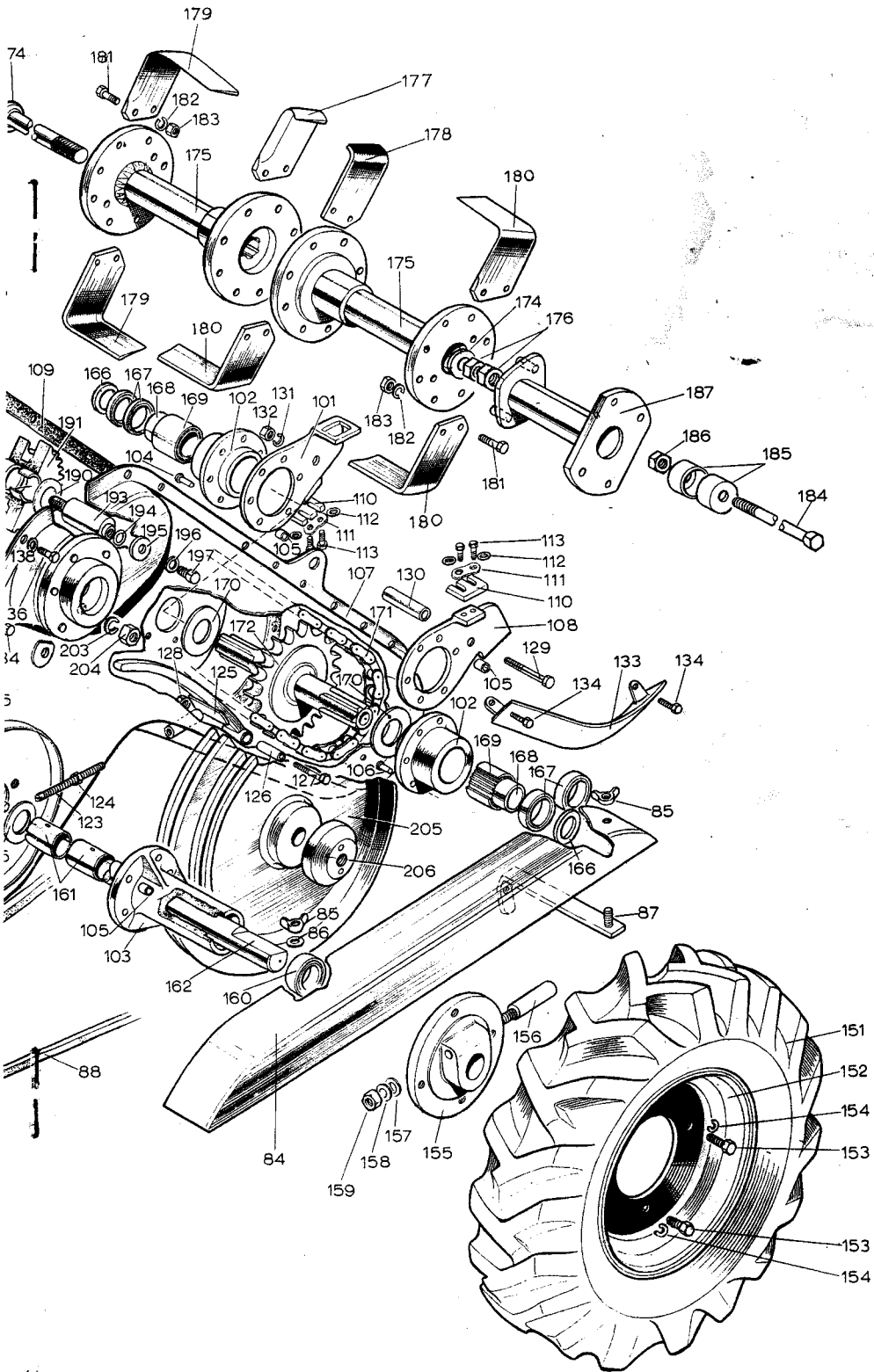
Unit, including Backplate, Chaincase, Wheels & Axle, or Drive Assemblies

Howard Rotavator 300/350



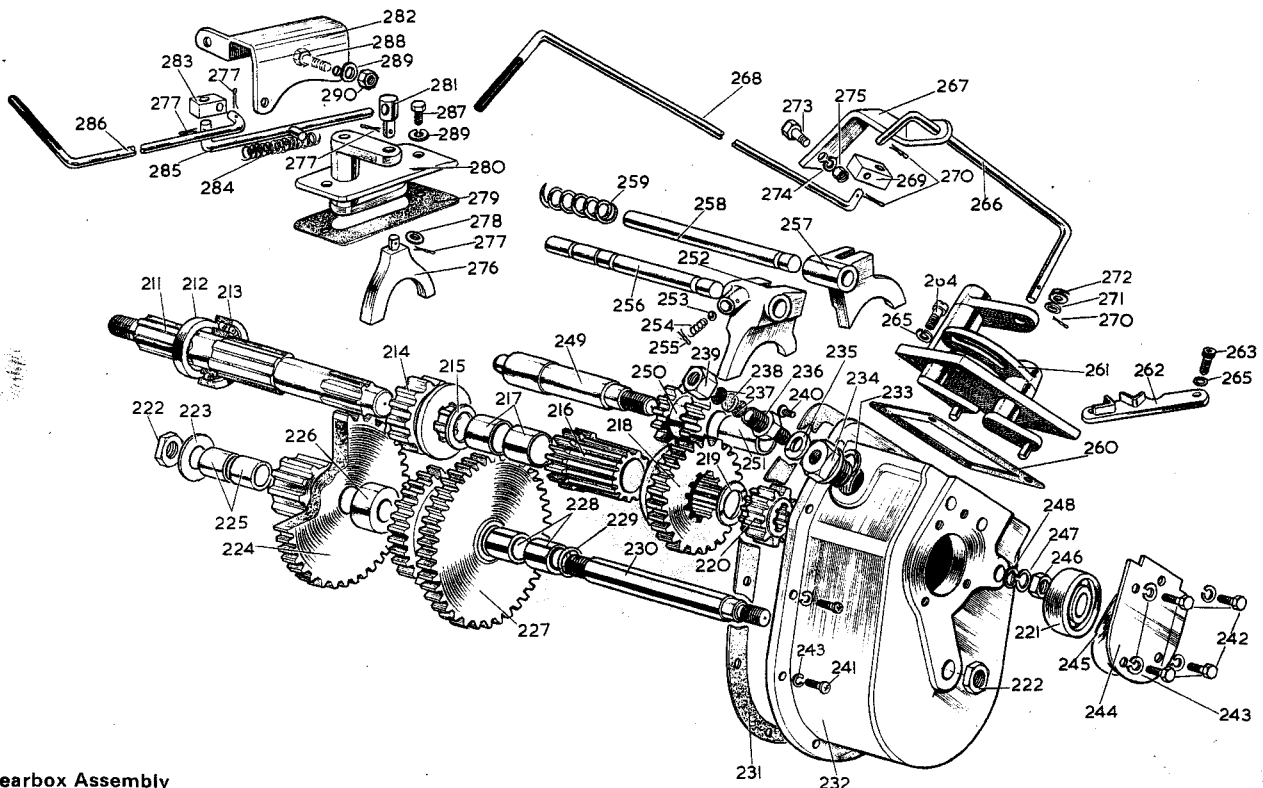
KOHLER 91

Frame Unit, including Backplate, Chaincase, Wheels & Axle, and Rotor Drive Assemblies



Howard Rotavator 300/350

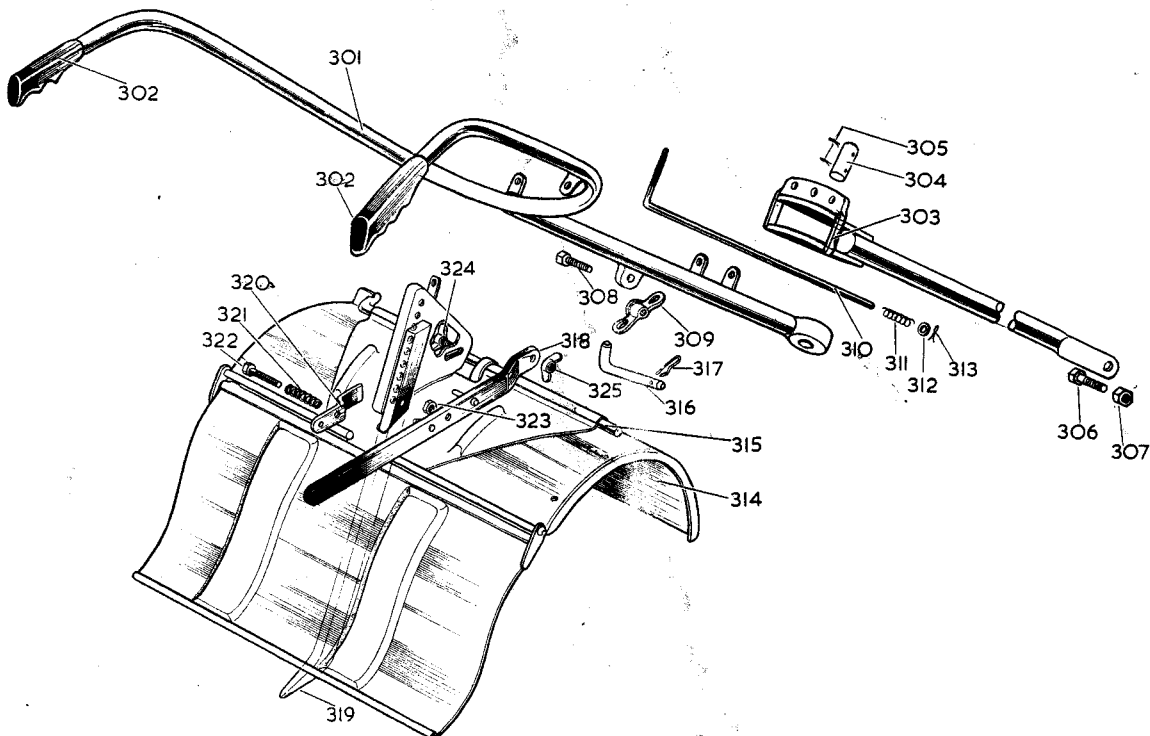
Illus. No.	Part No.	Description	No. off	Illus. No.	Part No.	Description	No. off
204	S.7207010	Nut 7/16" UNC.	1	234	66274	Plug	1
205	66452	Driven Pulley	1		66193	Breather Assembly comprising:—	1
206	67605	Pulley Nut	1			Washer	1
207 to 210 not allocated.				235	10580	Brass Union	1
211	64315	Drive Shaft	1	236	BJ.8312	Gauze Filter	2
212	B.61511021	Oilseal—Pioneer 11P. 150.112.25	1	237	23646	Breather Pad	1
213	B.50720071	Ballbearing 3/4" i.d. x 2" o.d. x 11/16" w. Hoff. MS.8	1	238	66195	Nut	1
214	64316	Rotor Selector Gear	1	239	G.279	Setscrew 5/16" UNC. x 3/8" long.	3
215	64320	Gear Spacer	1	240	S.43405030	Shallow Countersunk Head	6
	64318	Intermediate Drive Gear Assembly comprising:—	1	241	S.16404040	Setscrew 1/4" UNC. x 1/2" long.	1
216	64361	Drive Gear	1	242	S.1404040	Round Head, Phillips Recess	4
217	B.50709073	Bearing—Glacier No. 2406—3/4" i.d. x 7/8" o.d. x 3/4" long	2	243	S.8040840	Setscrew 1/4" UNC. x 1/2" long.	10
218	64319	Drive Shaft Gear 27T	1	244	64352	Hex. Head	1
219	64317	Thrust Washer	1	245	64459	Spring Washer 1/4" dia.	1
220	64321	Drive Shaft Gear 13T	1	246	S.7206010	Bearing and Slide Bar Cover	as required
221	B.50616041	Ballbearing 5/8" i.d. x 1.9/16" o.d. x 7/16" w. Hoff. LS.7	1	247	S.8061140	Gasket	1
222	S.7206020	Locknut 3/8" UNC.	2	248	S.8061210	Nut 3/8" UNC.	1
223	67264	Thrust Washer	1	249	64334	Spring Washer 3/8" dia.	1
	67260	Final Drive Pinion Assembly comprising:—	1		64362	Flat Washer 3/8" dia.	1
224	67261	Final Drive Pinion	1	250	64363	Reverse Spindle	1
225	B.50607063	Bearing—Glacier No. 2005—5/8" i.d. x 23/32" o.d. x 5/8" long	2	251	B.50607103	Reverse Gear Assembly comprising:—	1
226	67262	Gear Spacer	1			Reverse Gear	1
	67258	Cluster Gear Assembly comprising:—	1	252	64322	Bearing—Glacier No. 2008—5/8" i.d. x 23/32" o.d. x 1" long	1
227	67259	Cluster Gear	1	253	B.50001801	Travel Selector	1
228	B.50607063	Bearing—Glacier No. 2005—5/8" i.d. x 23/32" o.d. x 5/8" long	2	254	64471	Ball 3/16" dia.	1
229	67495	Shim .015	as required	255	B.8010040	Spring	1
	67494	Shim .010	as required	256	64325	Splitpin 1/16" dia. x 1/2" long	1
230	67263	Intermediate Shaft	1	257	64323	Travel Selector Slide Bar	1
231	64395	Gearbox Gasket	1	258	64324	Reverse Selector	1
232	64308	Gearbox	1	259	64472	Reverse Selector Slide Bar	1
233	B.2029040	Washer—Benton and Stone No. 1386D.	1	260	64379	Reverse Selector Spring	1
				261	66356	Gasket	as required
				262	65750	Gearbox Cover and Selectors	1
				263	S.6404120	Selector Gate	1
				264	S.3404050	Capscrew 1/4" UNC. x 3/8" long	2
						Cheese Head Setscrew 1/4" UNC. x 5/8" long	2



Gearbox Assembly

Howard Rotavator 300/350

Illus. No.	Part No.	Description	No. off	Illus. No.	Part No.	Description	No. off
265	S.8040830	Shakeproof Washer 1/2" dia.	4			HANDLEBARS	
266	65507	Lower Control Rod	1	301	65431	Handle Bar Stem	1
267	65439	Control Rod Bracket	1	302	20557	Handle Bar Grip	2
268	69183	Upper Control Rod	1	303	65432	Handle Bar Mounting	1
269	65506	Gear Control Trunnion	1	304	65433	Pin	1
270	B.8010050	Splitpin 1/16" dia. x 5/8" long	3	305	B.8010200	Splitpin 1/8" dia. x 1" long	2
271	S.8051010	Flat Washer 5/16" dia.	1	306	S.1306080	Bolt 3/8" UNF. x 1" long	1
272	S.8050950	Spring Washer 5/16" dia. Double Coil	1	307	S.7106030	Philidas Nut 3/8" UNF. JUF.	1
273	S.1304080	Bolt 1/2" UNF. x 1" long	1	308	S.1306100	Bolt 3/8" UNF. x 1 1/2" long	1
274	S.8040840	Spring Washer 1/2" dia.	1	309	B.7001150	Wing Nut 3/8" UNF. Utility Cycle No. 2	1
275	S.7104010	Nut 1/2" UNF.	1	310	65430	Release Handle	1
	68792	Rotor Selector Control Assembly comprising:—	1	311	62135	Spring	1
		Rotor Selector	1	312	S.8061210	Flat Washer 3/8" dia.	1
276	64390	Rotor Selector	1	313	B.8010050	Splitpin 1/16" dia. x 5/8" long	1
277	B.8010040	Splitpin 1/16" dia. x 1/2" long	4			SHIELDS	
278	S.8040910	Flat Washer 1/2" dia.	1	314	64434	Rotor Shield—16" Model	1
279	65499	Gasket	1	314	64455	Rotor Shield—23" Model	1
280	68793	Rotor Selector	1	315	64439	Shield Securing Pin	1
281	68910	Trunnion	1	316	67284	Shield Securing Pin	1
282	68798	Selector Gate	1	317	67285	Clip Pin	1
283	20545	Trunnion Block	1	318	64440	Depth Control Handle	1
284	68909	Rotor Selector Spring	1	319	64446	Depth Skid	1
285	68795	Rotor Selector Rod	1	320	64445	Spring Clip	1
286	68801	Rotor Control Rod	1	321	20470	Spring	1
287	S.1404040	Setscrew 1/2" UNC. x 1 1/2" long, Hex. Head	2	322	S.1204120	Bolt 1/2" UNC. x 1 1/2" long	1
288	S.1404060	Setscrew 1/4" UNC. x 3/4" long, Hex. Head	2	323	S.7204010	Nut 1/2" UNC.	1
289	S.8040840	Spring Washer 1/2" dia.	4	324	64443	Depth Control Handle Pivot Bolt	1
290	S.7204010	Nut 1/2" UNC.	2	325	S.7205060	Wing Nut 5/16" UNC.	1
291 to 300 not allocated.							



Handlebar and Shields Assembly

Howard Rotavator 300/350

NUMERICAL PARTS LIST

N.I.—not illustrated

Part No.	Illus. No.	Part No.	Illus. No.	Part No.	Illus. No.	Part No.	Illus. No.	Part No.	Illus. No.
G.279	239	64439	315	67263	230	B.8010040	277	S.7106010	159
G.316	29	64440	318	67264	223	B.8010050	270	S.7106030	307
G.830	111	64443	324	67275	125	B.8010050	313	S.7108010	122
P.0869	115	64445	320	67280	123	B.8010130	116	S.7210020	176
B.J.8312	236	64446	319	67281	126	B.8010200	305	S.7210200	37
9896	179	64450	173	67284	316	B.8012320	13	S.7204010	132
9897	180	64451	187	67285	317	B.8029030	33	S.7204010	139
10580	235	64455	314	67494	229	B.8035060	106	S.7204010	290
14144	181	64459	245	67495	229	B.8035070	104	S.7204010	323
14224	165	64465	155	67605	206	B.8036020	105	S.7205010	26
14509	10	64466	156	67782	47	B.9001360	151	S.7205010	73
20470	321	64467	152	68306	69	B.9001370	151	S.7205010	83
20545	283	64469	114	68312	14	B.50001801	253	S.7205020	7
20557	302	64471	254	68313	22	B.50607063	225	S.7205020	124
23646	237	64472	259	68317	66	B.50607063	228	S.7205060	85
25578	137	64485	178	68318	84	B.50607103	251	S.7205060	325
25914	4	64486	177	68410	65	B.50616041	221	S.7206010	80
26575	41	64495	117	68714	102	B.50616045	9	S.7206010	118
34233	38	64496	110	68792	276	B.50709073	217	S.7206010	246
54695	50	64497	163	68793	280	B.50709103	201	S.7206020	222
60954	1	65114	195	68795	285	B.50720071	213	S.7207010	204
62135	311	65131	133	68798	282	B.51011053	192	S.7208010	187
64308	232	65430	310	68801	286	B.51011123	161	S.7503010	53
64315	211	65431	301	68831	87	B.51227075	19	S.8030540	36
64316	214	65432	303	68908	15	B.52530382	168	S.8030540	49
64317	202	65433	304	68909	284	B.53037264	169	S.8040830	112
64317	219	65439	267	68910	281	B.61510041	160	S.8040830	265
64318	216	65475	184	68928	13	B.61511021	212	S.8040840	68
64319	218	65476	185	68929	20	B.61712023	167	S.8040840	131
64320	199	65499	279	68930	11	S.1105140	127	S.8040840	138
64320	215	65506	269	68931	17	S.1108280	119	S.8040840	243
64321	220	65507	266	68932	31	S.1204120	67	S.8040840	274
64322	252	65750	262	68933	31	S.1204120	322	S.8040840	289
64323	257	66193	235	68936	32	S.1204170	129	S.8040910	278
64324	258	66195	238	68938	13	S.1205220	6	S.8050940	72
64325	256	66274	234	69123	35	S.1205240	24	S.8050940	82
64327	100	66356	261	69155	74	S.1206120	76	S.8050940	182
64330	103	66391	3	69157	75	S.1304050	113	S.8050950	272
64334	249	66427	2	69183	268	S.1304080	273	S.8051010	71
64338	102	66440	23	B.2023140	194	S.1306080	306	S.8051010	81
64343	164	66452	205	B.2029040	233	S.1306100	308	S.8051010	86
64344	162	66592	100	B.3001070	N.I.	S.1404040	136	S.8051010	271
64352	244	66593	107	B.3001130	N.I.	S.1404040	242	S.8051030	25
64361	216	66638	108	B.3031050	140	S.1404040	287	S.8051030	196
64362	250	66639	101	B.3101510	64	S.1404060	135	S.8061130	28
64363	250	66923	16	B.3102330	45	S.1404060	288	S.8061140	79
64364	172	66926	8	B.3210149	51	S.1404070	134	S.8061140	154
64367	170	66927	14	B.3220122	62	S.1405040	197	S.8061140	158
64379	260	67248	200	B.3220133	63	S.1405090	70	S.8061140	247
64390	276	67249	200	B.3220145	61	S.1406060	27	S.8061210	157
64391	130	67250	198	B.4006170	88	S.1406060	153	S.8061210	248
64392	120	67251	191	B.7001090	42	S.1406080	77	S.8061210	312
64393	171	67252	191	B.7001150	309	S.1703040	52	S.8071240	203
64394	109	67255	193	B.7001220	44	S.2406100	78	S.8081440	121
64395	231	67256	189	B.7005100	46	S.3404050	264	S.8081440	188
64417	40	67257	190	B.8001160	18	S.3902030	48	S.16404040	241
64420	175	67258	227	B.8002080	21	S.6404120	263	S.17305050	30
64427	173	67259	228	B.8003290	43	S.7104010	275	S.41410070	34
64429	166	67260	224	B.8010040	5	S.7105010	183	S.42410040	12
64430	174	67261	224	B.8010040	39	S.7105010	186	S.43405030	240
64431	314	67262	226	B.8010040	255	S.7105030	128		

Following Howard policy of continuous improvement, the Company reserves the right to amend model specifications and prices at any time without notice.